

# Learning and action alliances for Nexus environments in an uncertain future LENSES



This project is part of the PRIMA programme supported by the  
European Union

**Learning and action alliances for Nexus  
environments in an uncertain future**

# LENSES

## Overview, approach and main goals

**Stefano Fabiani**





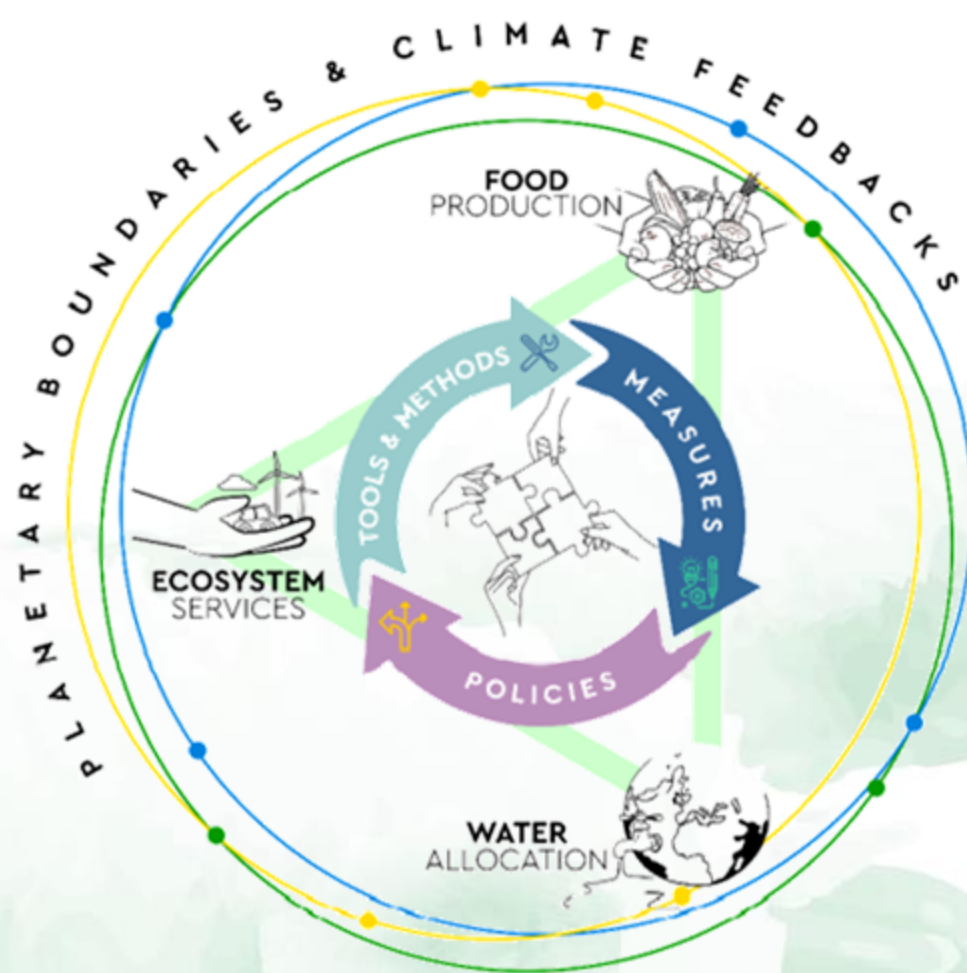
This project is part of the PRIMA programme supported by the European Union under the GA n° [2041] [LENSES] [Call 2020 Section 1 Nexus IA]



Resilient WEF Nexus systems is only possible through the true **engagement of all relevant parties in the policy-dialogue and decision-making processes** across the domains while incorporating uncertainty!

LENSES will use **LAA** and **PSDMs** in a multi-scalar WEF Nexus analysis to:

- i. Improve the **understanding of the interlinkages** between the different sectors of WEF Nexus and of how actions in one sector create consequences in the other sectors;
- ii. Support a socio-economic, policy and environment-related **scenario analysis**;
- iii. Help in the co-designing and building of systemic and innovative **resilience-enhancing solutions** (such as NBS), capable to support system transition towards sustainable development and SDG delivery;
- iv. Enhance **trust between stakeholders** and **awareness of the complexity of the systems** under investigation.



## Structure of work plan

Middle Jordan Valley  
(JO)

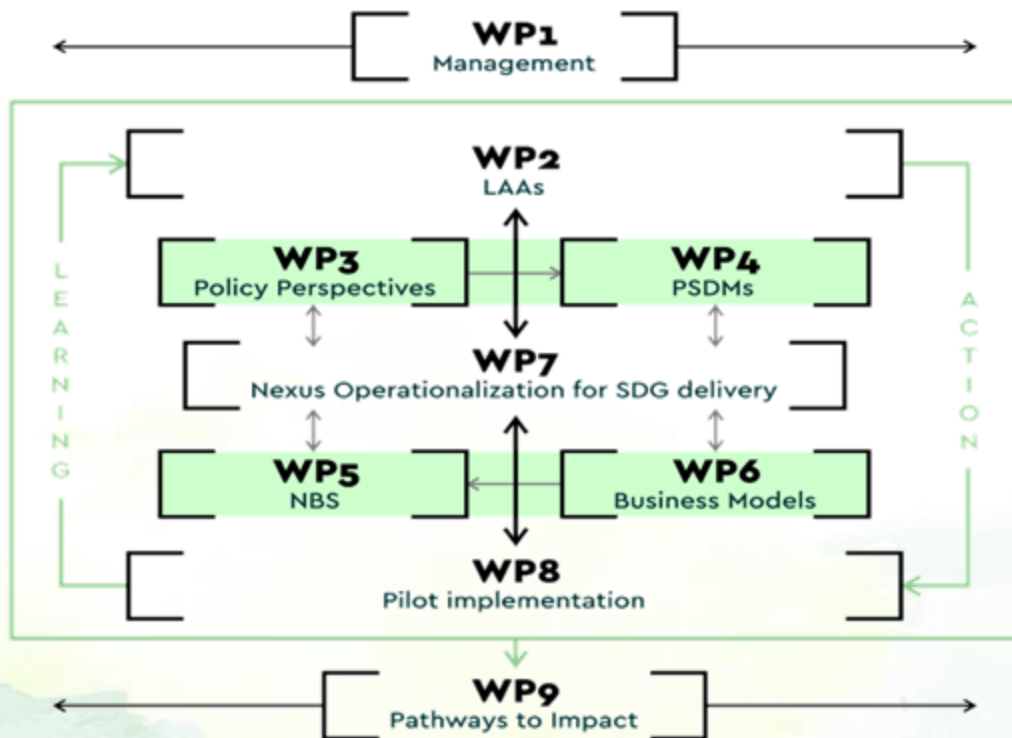
Galilee, Hula Valley  
(Israel)

Guadalquivir basin,  
Doñana national park  
area (Spain)

Tarquinoa plain  
(IT)

Gediz Basin &  
Delta (Turkey)

International Long-Term  
Ecological Research  
Network Sites (GR)



- Different **conflicting water and land uses** (food production through agricultural activities, forest and natural ecosystems conservation and other activities (e.g. tourism, industrial production, etc.).
- Typical **Mediterranean conditions**, in terms of e.g. climate conditions and climate change impacts, interaction between surface water (SW) and groundwater (GW), potentially conflicting uses of the resources, relevance of agricultural activities, types of crops, social context and stakeholders.

## Innovation potential and impact

1. ...from Nexus Thinking to Nexus Doing;
2. Development of an operational approach to the **interdependent management** of Water-Ecosystems-Food resources (Mediterranean region conditions);
3. **Replicability of the demonstration cases** also after the project's end;
4. Creating strong **cross-sectoral links** between institutions including ground-level beneficiaries and relevant public authorities that govern the Nexus approach;
5. Strengthen scientific capacities and set-up a **collaborative WEF Nexus space** across the Mediterranean region.





**Thank you  
for your attention!**



**Contacts:**

[stefano.fabiani@crea.gov.it](mailto:stefano.fabiani@crea.gov.it)

[tiziana.pirelli@crea.gov.it](mailto:tiziana.pirelli@crea.gov.it)

This presentation reflects only the author's view.

The PRIMA Foundation is not responsible for any use that may be made of the information it contains.



This project is part of the PRIMA programme supported by the European Union.  
GA n° [2041] [LENSES] [Call 2020 Section 1 Nexus IA]