

the LENSES project

Learning and action alliances for Nexus Environments in an uncertain future

LENSES

Tiziana Pirelli¹, Silvia Vanino², Valentina Baratella², Antonella Di Fonzo¹, Stefano Fabiani¹

¹Centre for Agricultural Research and Economics. Centre for Agricultural Policies and Bioeconomy, via Barberini 36 – Rome (Italy)

²Centre for Agricultural Research and Economics. Centre for Agriculture and Environment, via della Navicella 2 – Rome (Italy)

Corresponding author: tiziana.pirelli@crea.gov.it

“1st MED-IAERE - Conference - 23rd April 2022, Cagliari”

CONSORTIUM



TECHNICAL UNIVERSITY OF CRETE



المركز الوطني للبحوث الزراعية
National Agricultural Research Center



FROM NEXUS THINKING TO NEXUS DOING

Moving beyond the scientific Nexus understanding, LENSES aims to support the operationalization of the Nexus paradigm (from Nexus thinking to Nexus doing), therefore contributing to improve water allocation, enhance food security while preserving ecosystems and aiding climate change adaptation.

LENSES integrates the concepts of sustainable Nexus management with a resilience-oriented approach, leading stakeholders in accepting uncertainty as integral part of management and decision-making processes.

4 NEXUS DOMAINS

LENSES will enable multi-stakeholders communities to move from domain thinking to Nexus Thinking and Nexus Doing in very practical ways. It will enhance the understanding of the complex web of interactions affecting the nexus by using algorithms which link the different domains and run dynamic scenarios.

Vulnerabilities across the nexus domains will be reduced by harnessing ecosystem services and biodiversity through e.g. nature-based solutions.



MULTIPLE STAKEHOLDERS

LENSES will support a mutual-learning process in multi-actors communities among the pilots. This will help identify existing WEF challenges and conflicts in resource uses, assess the multi-dimensional implications of choices and policies and exploring pathways to implementing specific measures (e.g. nature-based solutions).

PUBLIC

Public Authorities & Policy Makers; National Universities & Research Institutes; Asset Owners; River Basin/ Water Management bodies; Media & press (local, national, EU & Med).

PRIVATE

Farmers; Cooperatives; NGOs & CSOs; Water Users Associations; Relevant Associations; Participants in LAAs & general public.

MULTILATERAL

International Organisations & Processes; International Financial Institutions & Donors; Multinational Research Centers.

9 SPECIFIC OBJECTIVES

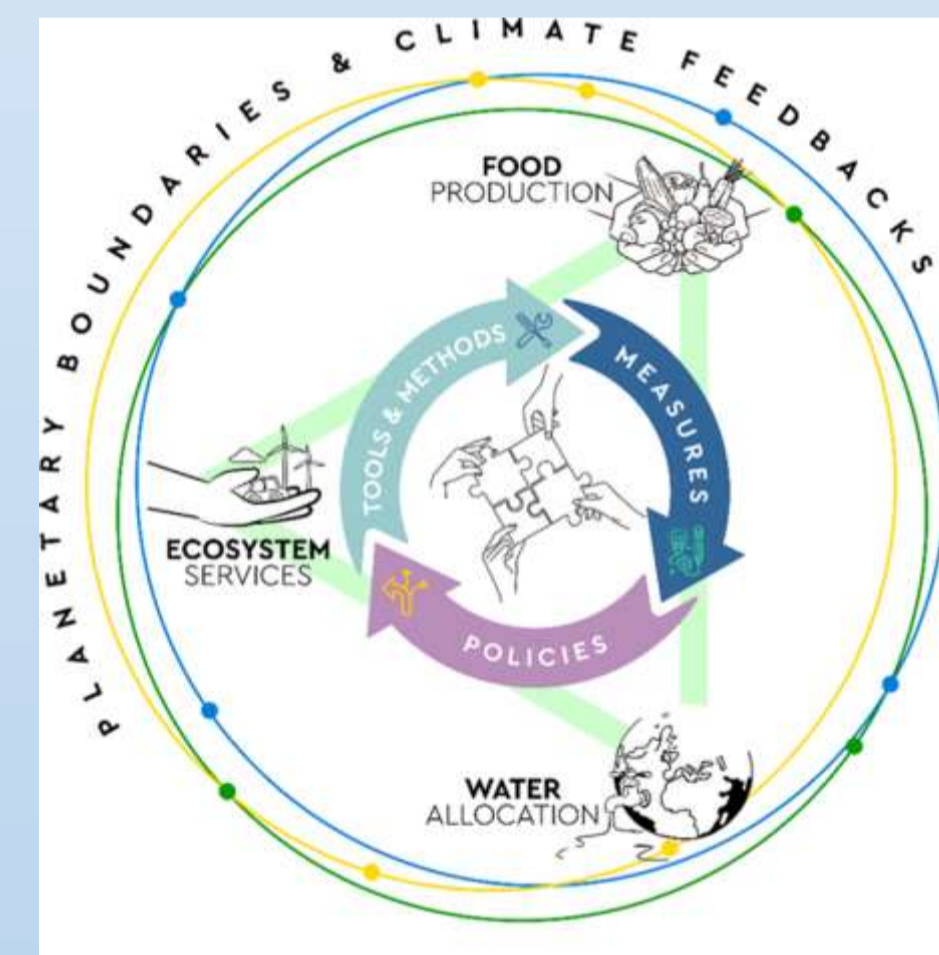
1. To identify Nexus Domain Objectives (DOs) & Nexus Resilience Qualities (NRC) that facilitate the transition.
2. To activate Learning & Action Alliances (LAAs) to drive the Nexus dialogue.
3. To develop Participatory System Dynamics Models (PSDM) to support evidence-based policy design.
4. To co-design scenarios to test WEF Nexus resilience.
5. To carry out Ecosystem Services (ESS) assessments to inform multi-objective policies and measures.
6. To assess and manage interdependences between Nexus and SDGs.
7. To improve Natural Governance and align WEF policies toward Nexus management.
8. To build Nexus business cases using environmental and ecological economics.
9. To plan Nature-based Solutions (NBS) measures to co-achieve multiple DOs.

7 PILOT AREAS

All selected pilot areas represent typical Mediterranean conditions at the same time being very heterogeneous for their focus on conflicting water and land uses, food production chains, farmland, forest and natural ecosystems conservation activities, co-existence of agriculture, and other (e.g. tourism, industrial production, etc.) productive realms. Specific lessons from the pilots will be captured to capitalize in the future elsewhere in similar environments.



8 METHODOLOGICAL APPROACHES



LENSES follows a mixed methodology. On one hand, it is guided by hypothesis and the need for generalizable findings and broadly applicable methodologies and, on the other hand, by the need for a challenge-driven innovation approach.

Here below, a list of LENSES key approaches.

- Participatory Approaches and Learning & Action Alliances (LAAs)
- Policy Recommendations
- Participatory System Dynamics Modelling (PSDM)
- Ecosystem Services Assessments
- Nexus-SDG co-evaluations
- Natural Resource Economics
- Nature-based Solutions
- Gender dimension

CONTACTS

www.lenses-prima.eu

info.lenses@crea.gov.it



DETAILS

Duration: 01 May 2021 - 30 April 2024

Budget: 3.482.000,00

EU contribution: 2.998.000,00



This roll-up reflects only the author's view and the PRIMA Foundation is not responsible for any use that may be made of the information it contains.

This project is part of the PRIMA programme supported by the European Union GA n° [2041] [LENSES] [Call 2020 Section 1 Nexus IA]

