

LENSES

LEarning and action alliances for NexuS Environments in an uncertain future

4 NEXUS DOMAINS

LENSES will enable multi-stakeholders communities to move from **domain thinking to Nexus Thinking and Nexus Doing** in very practical ways. It will **enhance the understanding of the complex web of interactions affecting the nexus** by using algorithms which link the different domains and run dynamic scenarios.

Vulnerabilities across the nexus domains will be reduced by **harnessing ecosystem services and biodiversity through e.g. nature-based solutions.**



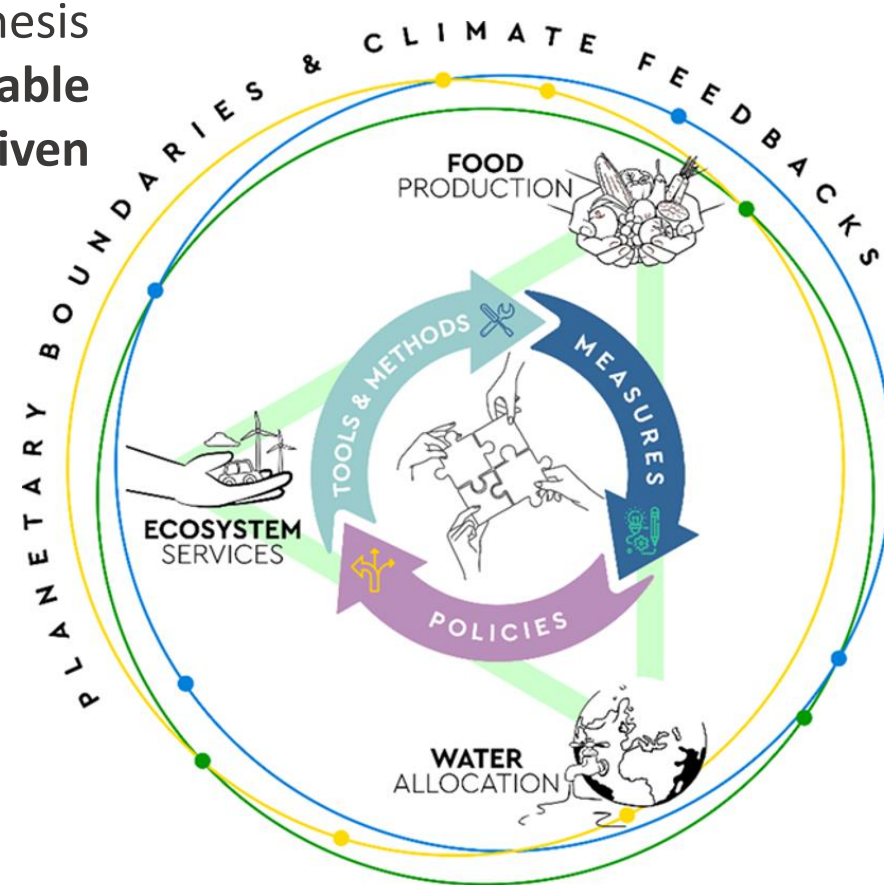
7 PILOT AREAS

All selected pilot areas represent typical Mediterranean conditions at the same time being very heterogeneous for their focus on conflicting water and land uses, food production chains, farmland, forest and natural ecosystems conservation activities, co-existence of agriculture, and other (e.g. tourism, industrial production, etc.) productive realms. Specific lessons from the pilots will be captured to capitalize in the future elsewhere in similar environments.



LENSES follows a mixed methodology. On one hand, it is guided by hypothesis and the **need for generalizable findings and broadly applicable methodologies** and, on the other hand, by the need for a **challenge-driven innovation approach**. Here below, a list of LENSES key approaches.

- Participatory Approaches and Learning & Action Alliances (LAAs)
- Policy Recommendations
- Participatory System Dynamics Modelling (PSDM)
- Ecosystem Services Assessments
- Nexus-SDG co-evaluations
- Natural Resource Economics
- Nature-based Solutions
- Gender dimension



MULTIPLE STAKEHOLDERS

LENSES supports a mutual-learning process in multi-actors communities among the pilots. This will help **identify existing WEF challenges and conflicts in resource uses**, assess the multi-dimensional implications of choices and policies and exploring pathways to implementing specific measures (e.g. nature-based solutions).

PUBLIC

- Public Authorities & Policy Makers
- National Universities & Research Institutes
- Asset Owners
- River Basin/ Water Management bodies
- Media & press (local, national, EU & Med)

PRIVATE

- Farmers -
- Cooperatives -
- NGOs & CSOs -
- Water Users Associations -
- Relevant Associations -
- Participants in LAAs & general public -

MULTILATERAL

- International Organisations & Processes
- International Financial Institutions & Donors
- Multinational Research Centers



Centre for Agricultural Research
and Economics (Italy)



University of Padua -
Department of Land,
Environment, Agriculture
and Forestry (Italy)



Water Research Institute of the
National Research Council
(Italy)



ETIFOR S.R.L. (Italy)



AgriSat Iberia, S.L. (Spain)



EcoAdapta (Spain)



Soil and Water Resources
Institute of the Hellenic
Agricultural Organization
"DEMETER" (Greece)



Technical University of Crete
(Greece)



Galilee Research Institute Ltd.
(Israel)



National Agricultural
Research Center (Jordan)



Draxis Environmental S.A.
(Greece)



International Agricultural
Research and Training Centre
(Turkey)



Uluslararası Arastirma
Gelistirme Muhendislik
Yazilim Ve Danismanlik
Limited Sirketi (Turkey)

Details

 *Duration: 01 May 2021 - 30 April 2024*

 *Budget: 3.482.000,00*

 *EU contribution: 2.998.000,00*

Contacts

 info.lenses@crea.gov.it

 www.lenses-prima.eu

Follow us

 The LENSES Project

 The LENSES Project

 LENSES Prima

THANKS FOR YOUR ATTENTION!



This presentation reflects only the author's view and the PRIMA Foundation is not responsible for any use that may be made of the information it contains